

COMMENTRY

Pancreatic Alteration Induced by Incretins is Consistent with the Changes at the Early Stages of Pancreatic Carcinogenesis in the Hamster Model

Parviz M Pour^{1,2}, Geoffrey Talmon²

¹The UNMC Eppley Cancer Center, ²Department of Pathology and Microbiology, University of Nebraska, Medical Center, Omaha, Nebraska

ABSTRACT

Background GLP-1 analogs and DPP4 inhibitors, known as incretins, are used for the treatment of type 2 diabetes. Although several published clinical and experimental studies point to the beneficial effects of these drugs with negligible mild side effects, except for acute pancreatitis, the detailed long-term effects of these drugs on the pancreas was missing. A recent report by the investigators at UCLA showing a profound expansion of pancreatic endocrine cells, hyperplasia of ductal epithelium and induction of endocrine lesions initiated serious concern about the safety of these drugs. **Methods** These alterations were almost identical to those found at the early stages of pancreatic carcinogenesis in the hamster model. Therefore, in the present study, we compared the alterations published by the UCLA investigators with the alterations of the pancreas occurring during pancreatic carcinogenesis in the hamster model. **Results and Discussion** The results heighten the safety concern of these drugs and suggest that incretins should be considered promoters of silent malignant pancreatic lesions. The use of these drugs should be restricted to genuine long-standing diabetics and be withheld from individuals with new-onset diabetes (Type 3 diabetes) who display asymptomatic pancreatic cancer.

INTRODUCTION

Glucagon-like peptide 1 based therapies [GLP-1 receptor agonists (exenatide, liraglutide and lixisenatide) and DPP-4 inhibitors (sitagliptin, vildagliptin, saxagliptin and linagliptin)] have been available since 2005 for the treatment of Type 2 diabetes.

The efficacy of GLP-1 receptor agonists and DPP-4 inhibitors has been demonstrated. In terms of safety, the most common adverse events seen in clinical trials with GLP-1 receptor agonists are of gastrointestinal character, mainly nausea, vomiting and diarrhea. However, the incidence diminishes over time. Other identified risks include pancreatitis, immunogenicity, acute renal failure and rapid weight loss. Identified and potential risks with DPP-4 inhibitors include hypoglycemia, hypersensitivity, gastrointestinal disorders, pancreatitis, skin disorders, transaminase elevation and infections.

Although the manufacturers of the drugs have recently included acute pancreatitis as a serious side effect of the GLP-1 drugs, two fundamental concerns have been disregarded, including:

1. The long-term effects of the drugs on the structure of the pancreas and its consequences; and

2. The physiological and pathological effects of the drug and their duration after their cessation.

The first concern was highlighted by a study of Butler *et al.* [1]. Using donor pancreases of Type 2 diabetics treated with incretins, they demonstrated massive and extended proliferation of pancreatic islet cells. Remarkably, the patterns of the morphological changes in their publication were almost identical to the early lesions induced in the hamster pancreatic cancer model. The present report compares the pancreatic lesions published by Butler *et al.* [1] with those found during pancreatic carcinogenesis in the Syrian hamster model [2].

MATERIAL AND METHODS

Histological and immunohistochemical material from published article are presented [1]. Incretin Mimetics Products Liability Litigation is still on-going, therefore, we were unable to obtain permission for the reproduction of the photomicrograph published by Butler *et al.* [1].

The presented figures from the hamster study (1974-2010) were obtained from the Tumor Archive at the UNMC Eppley Cancer Center.

RESULTS

As described earlier in detail in the hamster model [2], the earliest alteration in carcinogen-treated animals is the development of ductular structure within (intraisular ducts) and around the islets (perinsular duct). The initially tiny intraisular ductules gradually enlarge. Due to serous

Received May 15th, 2016 - Accepted July 19th, 2016

Keywords Glucagon-Like Peptide 1; Islets of Langerhans; Pancreatic Neoplasms

Abbreviations GLP-1 Glucagon-Like Peptide 1

Correspondence Parviz Pour

UNMC Eppley Cancer Center

University of Nebraska Medical Center

Omaha, NE

Tel + 402-559-4495

Fax + 402-559-4651

E-mail ppour@unmc.edu

and mucinous secretion by ductular cells, the ductules undergo cystic distention and the increasing pressure of liquid within the intransular ductules causes atrophy of the islet cells that appear as a small or tiny cell aggregate attached to the cystic wall (**Figure 1,2**). In animals exposed to a high dose of carcinogen the intra- and peri-insular ductules undergo gradual hyperplasia, dysplasia and culminate in the malignant gland that finally destroys the islets and invades the surrounding tissue [2]. In hamsters exposed to a single injection or repeated low doses of the carcinogen, the earliest and the solitary alteration is the formation of intransular ductules that either remain stationary during the animal's life span or slowly and gradually progress to neoplastic lesions. **Figure 2a** in the publication of Butler *et al.* [1] presents an identical pattern. In addition to the scattered islets of various sizes in the figure, there is one large islet in the lower middle field that contains a cystic duct and, in the upper middle field, there is another cystic duct with an atrophic islet inside. The remaining three cystic ducts appear to have lost the insular mass but still contain islet cells within their epithelium.

Another striking feature in the induced lesions in the hamster model, as well as in human pancreatic cancer, is the presence of endocrine cells within the hyperplastic ducts, the number of which may seem to exceed the number of the ductal cells (**Figure 3**). Identical patterns have been observed in the study of Butler *et al.* [1] shown in **Figure 2cde**. Mucinous ductal cell hyperplasia bearing endocrine

cells at the base of the epithelium, a characteristic finding in human pancreatic cancer and in the hamster model has also been demonstrated [1].

DISCUSSION

The present comparative study provides evidence that GLP-1 treatment in type 2 diabetics causes profound alterations of the pancreas, consistent with early lesions occurring during pancreatic carcinogenesis in hamsters.

The origin of pancreatic cancer has remained controversial. Genetic studies have suggested that under diverse experimental conditions different pancreatic epithelial cells, including pre-existing acinar cells, pre-existing β -cells, pancreatic ductal cells, and cells expressing the mesenchymal marker nestin, may undergo malignant transformation [3, 4, 5, 6, 7, 8]. The development of the hamster pancreatic cancer model, that in clinical, morphological, biological and genetic aspects mimics the human disease [9], to the surprise of many investigators, showed that islet cells play a major role in pancreatic cancer development [2]. The initial lesion in hamsters is the appearance of ductular structures within the islets as initially tiny conduits that gradually increase in size and undergo cystic or malignant changes that totally destroy the islets and invade the surrounding tissue, while alterations of large ducts occur later [2]. The occurrence of intransular ductules was thought to be related to the transdifferentiation of islet cells to ductular cells, a process that was confirmed by several studies [10, 11, 12, 13, 14,

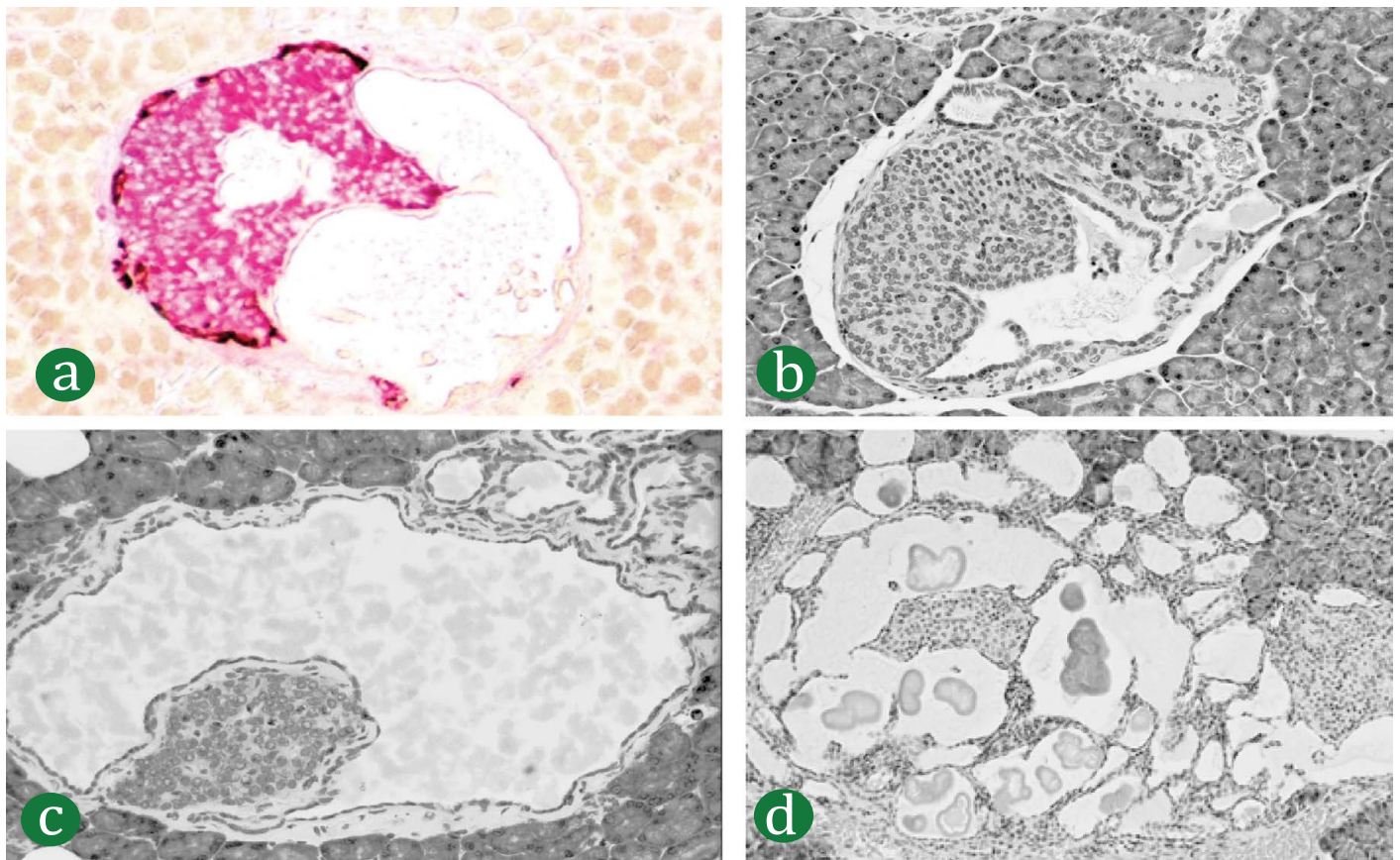


Figure 1. Intransular ductular patterns. **(a, b)**. Islets of Syrian hamster treated once with pancreatic carcinogen, N-nitroso(2-oxopropyl) nitosamine show cystic ducts occupying almost half the islet and are filled with floccus material. Insulin, red and glucagon, brown. ABC method x 40. **(c, d)**. Atrophic islets attached to the wall of the cystic ducts directly **(c)**, or by a thin connective tissue **(d)**. There are also numerous periinsular ductular structures.



Figure 2. Large population of endocrine cells in malignant pancreatic adenocarcinoma in humans and hamsters. These figures are strikingly similar to the figures, respectively, published by Butler *et al.* [1].

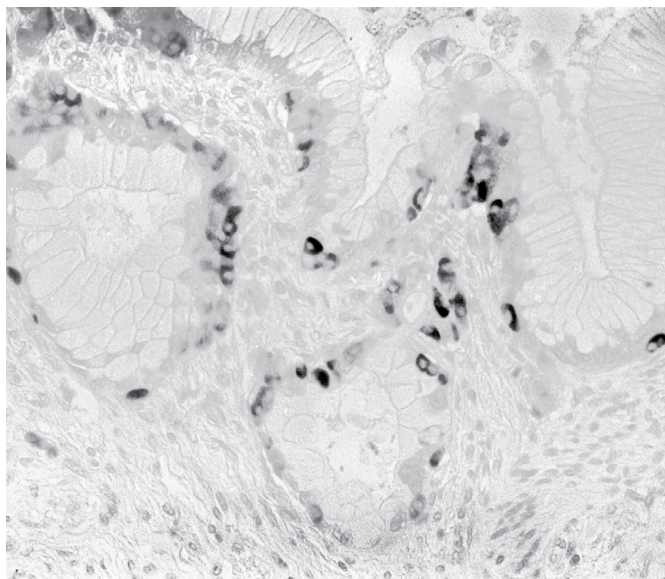


Figure 3. Human pancreatic mucinous adenocarcinoma with numerous endocrine cells in the basal epithelial layer. Identical lesions were illustrated as figures by Butler *et al.* [1] in diabetic patients treated with incretin. A: Insulin (blue), glucagon (brown), somatostatin (black), ABC method, x40; B: insulin (red), glucagon (brown), ABC, x40; C: insulin (brown), ABC, x40.

15]. The purified human and hamster pancreatic islets in culture were shown to form ductal, acinar and intermediary cells (cells with both exocrine and endocrine phenotypes) [10, 11, 12, 13, 14, 15]. Hamster islet cells treated *in vitro* with pancreatic carcinogen, N-nitrosobis(2-oxopropyl) amine formed ductal adenocarcinoma *in vivo* [11]. Based on the silent clinical course of pancreatic cancer and difficulties in dissecting the entire pancreas in serial sectioning, the possibility that human pancreatic cancer also initiates from the islets remained obscure.

The fundamental role of islet cells in pancreatic carcinogenesis was evident by the observation that any procedure that stimulated islet cell replication, such as induction of nesidioblastosis, feeding a diet high in fat, which enlarges the islets, enhanced the cancer formation [2]. Although the increased incidences of pancreatic cancer in obese people, who have enlarged pancreatic cells [16, 17, 18, 19], appear to be in line with the findings in hamsters, the link was bleak. The study by Butler *et al.* offered the missing link [1].

Some academic and industrial researchers [20, 21] criticized the paper of Butler *et al.* [1]. Although some of

their points from toxicological standards were reasonable, considering the parameters that they have recommended, thousands or even more brain-dead organ donors would have been required to obtain statistically significant data. These authors did not propose how to obtain the adequate number of treated and untreated sex-, age- and BMI-matched donor pancreases receiving the same agent (of more than 20 that are currently in use) and disregarded the simple fact that the described unique alterations have never been reported in the pancreas of any normal or diabetic persons treated or untreated with various agents. Yet, the lesions were found only in the eight treated patients but in none of the 14 controls [1].

The Committee for Medicinal Products for Human Use (CHMP) reviewed the publication by an ad-hoc expert meeting held on July 10, 2013 and concluded that the results of the study by Butler *et al.* are not considered to constitute a new safety signal for the GLP-1 based therapies with respect to pancreatic safety. It was argued that, due to the mechanism of action, there are still some uncertainties with respect to the long-term pancreatic safety associated with these products and updates to the risk management plans (including planned and ongoing studies) and that harmonization of warnings in the product information should be taken forward.

According to the assessment report for GLP-1 based therapies 25 July 2013 EMA/474117/2013, in clinical trials, a few cases have been reported for some products (**Table 1**). Although the data currently available from clinical trials do not indicate an increased risk for pancreatic cancer with these medicines, cases of pancreatic cancer have been reported in the post-marketing setting. A cumulative review of the cases has been undertaken and the majority (19 out of 29) had a time to onset of less than six months, a period considered too short to suggest a causal relationship.

The role of GLP-1 analogs in pancreatic cancer varies widely between the studies and based on the findings, multi-district litigation (MDL) were established. Some trials, including SAVOR-TIMI (of saxagliptin) and EXAMINE (of alogliptin), found no difference between dipeptidyl peptidase 4 (DPP-4) inhibitor treatment and placebo with regard to pancreatitis or pancreatic cancer [22]. In a recent study, the

Table 1. In 9 out of 15 cases pancreatic cancer occurred within three months. In Saxagliptin group the time was 4-18 months. In others no definite time lapse was recorded.

| Drug | Number of cases |
|--------------|-----------------|
| Exenatide | 2 |
| Liraglutide | 1 |
| Lixisenatide | 3 |
| Sitagliptin | 2 |
| Saxagliptin | 8 |
| Vildagliptin | 3 |
| Linagliptin | A few? |

risk was actually elevated for insulin. The pancreatic cancer rate was 9.39% vs. 2.61% for population controls, with an adjusted odds ratio of 3:6, suggesting that these drugs are strongly associated with pancreatic cancer [22].

Although certain classes of nitrosamines act as pancreatic carcinogen in hamsters [2], the over production of insulin seems to be the underlying factor in humans. Insulin is known as a strong mitogenic factor and accelerates cell growth [23, 24]. In diabetics, where the insulin-producing beta cells have lost the ability to produce insulin, GLP-1-enforced beta cell neogenesis and insulin synthesis could well lead to the formation of immature beta cells or to transdifferentiation of emerging beta cells to ductular cells associated with errors in DNA synthesis and genetic mutations. The ability of human islet cells to readily transdifferentiate into ductal (and acinar) cells has been covered previously.

The fate of the lesions described [1] in the patients cannot be predicted. Will it remain stationary, regress or progress to frank malignancy? In hamsters, the described alterations occur following low doses of pancreatic carcinogens and remain mainly stationary. In some instances, the alterations advance to hyperplastic change, indicating that the lesions virtually present the early stages of cancer in these patients. It is possible that the advanced lesions have escaped their detection. Although the observed morphological alterations in the patients do not provide definite signs of malignancy and, regrettably, the genetic alteration of the lesions was not performed, the findings remain a controversial issue. In diabetics the amount of locally secreted insulin and IGF-1 may not be sufficient to stimulate the growth of the altered cells, but the GLP-1-induced insulin certainly can affect the latent premalignant and small cancers, which are reported to occur in up to 36% of individuals over 50 years old [25, 26, 27, 28, 29, 30, 31, 32, 33, 34, 35, 36, 37], and in a 9.5% incidence of “silent” pancreatic cancer” in smokers [31]. These “silent” cancers are vulnerable to rapid growth in any condition leading to increased insulin and IGF-1 production. Support for this view is the increased pancreatic weight and ductal/ductular hyperplasia in incretin-treated animals and patients [1]. The reported and registered short latency of pancreatic cancer in clinical trials, mentioned previously is in-line with this likelihood.

The problem with this assessment is the lack of data from the pancreas of incretin-treated diabetics, the

same as Butler and associates. The ideal study to answer the question definitively would involve large-scale pathohistological examination, databases from multiple countries, providing enough data on new users as well as prevalent users in order to eliminate bias from the duration of use. Ideally, such studies would also last longer than any performed thus far. Most cancer epidemiologists would like to see a drug exposure of at least 8 to 10 years before they consider it usable.

Hence, the presented data suggest that incretins could act either as promoters or the initiator of pancreatic cancer and their use should be restricted to genuine long-standing diabetics and be withheld from individuals with new-onset diabetes (Type 3 diabetes) who present with asymptomatic pancreatic cancer [38, 39, 40, 41, 42, 43].

Given the >20 million known patients with type 2 diabetes in the United States alone, and the numerous GLP-1-based drugs either available now or in the final stages of development, the potential impact of the adverse effects of this class of drugs is considerable.

In summary, pushing the organism to perform a desirable function (to produce insulin) that the body, for its own justified reasons, does not want to do or is unable to do, can lead to unexpected, unwanted and sometimes disastrous results.

Conflict of Interest

The authors declare that there is no conflict of interests regarding the publication of this paper.

References

- Butler AE, Campbell-Thompson M, Gurlo T, Dawson D, Atkinson M, Butler P. Marked expansion of exocrine and endocrine pancreas with incretin therapy in humans with increased exocrine pancreas dysplasia and the potential for glucagon-producing neuroendocrine tumors. *Diabetes* 2013; 62:2595-604. [PMID: 23524641]
- Pour PM. Hamster as a pancreatic cancer model.
- Esposito I, Konukiewicz B, Schlitter AM, Klöppel G. Pathology of pancreatic ductal adenocarcinoma: facts, challenges and future developments. *World J Gastroenterol* 2014; 20:13833-13841. [PMID: 25320520]
- Maitra A, Leach SD. Disputed paternity: the uncertain ancestry of pancreatic ductal neoplasia. *Cancer Cell* 2012; 22:701-703. [PMID: 23238009]
- Ray KC, Bell KM, Yan J, Gu G, Chung CH, Washington MK, Means AL. Epithelial tissues have varying degrees of susceptibility to krasg12d-initiated. *PLoS One* 2011; 6:e16786. [PMID: 21311774]
- Kong B, Michalski CW, Erkan M, Friess H, Kleeff J. From tissue turnover to the cell of origin for pancreatic cancer. *Nat Rev Gastroenterol Hepatol* 2011; 8:467-472. [PMID: 21750515]
- Murtaugh LC, Kopinke D. Pancreatic Stem Cells. *StemBook* 2008:1-16. [PMID: 20614618]
- Ku HT. Minireview: pancreatic progenitor cells--recent studies. *Endocrinology* 2008; 149:4312-6. [PMID: 18535096]
- Pour PM. Why the hamster pancreatic cancer model is still the most useful tool for clinical studies. *JOP. Journal of the Pancreas* (in press).

10. Schmied BM, Ulrich A, Matsuzaki H, Ding X, Ricordi C, Moyer MP, Batra SK, et al. Maintenance of human islets in long term culture. *Differentiation*, 66:173-180, 2000. [PMID: 11269943]
11. Schmied BM, Ulrich A, Matsuzaki H, Li CH, Pour PM. In vitro pancreatic carcinogenesis. *Ann Oncol* 10:41-45, 1999. [PMID: 10436783]
12. Pour PM, Schmied BM, Ulrich AB, Friess H, Andren-Sandberg A, Büchler MW. Abnormal differentiation of islet cells in pancreatic cancer. *Pancreatology* 2001; 1:110-116. [PMID: 12120188]
13. Lucas-Clerc C, Massart C, Campion JP, Launois B, Nicol M. Long-term culture of human pancreatic islets in an extracellular matrix: morphological and metabolic effects. *Mol Cell Endocrinol* 1993; 94:9-20. [PMID: 8375579]
14. Yuan S, Rosenberg L, Paraskevas S, Agapitos D, Duguid WP. Transdifferentiation of human islets to pancreatic ductal cells in collagen matrix culture. *Differentiation* 1996; 61:67-75. [PMID: 8921586]
15. Kerr-Conte J, Pattou F, Lecomte-Houcke M, Xia Y, Boilly B, Proye C, Lefebvre J. Ductal cyst formation in collagen-embedded adult human islet preparations. A means to the reproduction of nesidioblastosis in vitro. *Diabetes* 1996; 45:1108-14. [PMID: 8690159]
16. Naeye RL, Roode P. The sizes and numbers of cells in visceral organs in human obesity. *Am J Clin Pathol* 1970; 54:251-3. [PMID: 5453216]
17. Ogilvie RF. The islands of Langerhans in 19 cases of obesity. *J Pathol Bacteriol* 1933; 37:473-481.
18. Ogilvie RF. The endocrine pancreas in human diabetes. In: Brolin SE, Hellman B, Knutson (eds) *The structure and metabolism of the pancreatic islet*. Wenner-Gren Center International Symposium series 3, Pergamon Press, Oxford 1964; 499-511.
19. Butler AE, Galasso R, Matveyenko, Rizza RA, Dry S, Butler PC. Pancreatic duct replication is increased with obesity and type 2 diabetes in humans. *Diabetologia* 2010; 53:21-26. [PMID: 19844672]
20. Bonner-Weir S, In't Veld PA, Weir GC. Reanalysis of study of pancreatic effects of incretin therapy: methodological deficiencies. *Diabetes Obes Metab* 2014; 16:661-666. [PMID: 24400596]
21. Harja E, Lord J, Skyler JS. An analysis of characteristics of subjects examined for incretin effects on pancreatic pathology. *Diabetes Technol Ther* 2013; 15:609-618. [PMID: 23927624]
22. Tucker ME. Study Suggests Incretin Drugs Don't Cause Pancreatic Cancer. www.medscape.com/viewarticle/851034.
23. von Wichert G, Jehle PM, Hoeflich A, Koschnick S, Dralle H, Wolf E, Wiedenmann B, et al. Insulin-like growth factor-I is an autocrine regulator of chromogranin A secretion and growth in human neuroendocrine tumor cells. *Cancer Res* 2000; 60:4573-81. [PMID: 10969809]
24. Ohmura E, Okada M, Onoda N, Kamiya Y, Murakami H, Tsushima T, Shizume K. Insulin-like growth factor I and transforming growth factor α as autocrine growth factors in human pancreatic cancer cell growth. *Cancer Res* 1990; 50:103-107. [PMID: 2152769]
25. Kimura W, Morikane K, Esaki Y, Chan WC, Pour PM. Histological and biological patterns of microscopic ductal adenocarcinomas detected incidentally at autopsy. *Cancer* 82:1839-1849, 1998. [PMID: 9587115]
26. Tomioka T, Andrén-Sandberg A, Fujii H, Egami H, Takiyama Y, Pour PM. Comparative histopathological findings in the pancreas of cigarette smokers and non-smokers. *Cancer Lett* 1990; 55:121-8. [PMID: 2265410]
27. Kimura W, Morikane K, Esaki Y, Chan WC, Pour PM. Histological and biological patterns of microscopic ductal adenocarcinomas detected incidentally at autopsy. *Cancer* 1998; 82:1839-1849. [PMID: 9587115]
28. Sommers SC, Murphy SA, Warren S. Pancreatic duct hyperplasia and cancer. *Gastroenterology* 1954; 27:629. [PMID: 13210601]
29. Collins JJ Jr, Craighead JE, Brooks JR. Rationale for total pancreatectomy for carcinoma of the pancreatic head. *N Engl J Med* 1966; 274:599. [PMID: 5930007]
30. Wilson C, Imrie CW. Occult pancreatic cancer with recurrent acute pancreatitis. *Postgrad Med J* 1986; 62:765-7675. [PMID: 3774710]
31. Tomita T, Vacha E, Rengachery S, Watanabe I. Occult adenocarcinoma of the pancreas in a patient with Lindau's disease. *Am J Dig Dis* 1978; 23:80-83.
32. Compagno J, Oertel JE (1978) Microcystic adenomas of the pancreas. A clinicopathologic study of 34 cases. *Am J Clin Pathol* 69:289-298. [PMID: 637043]
33. Warshaw AL, Compton CC, Lewandrowski K, Cardena G, Mueller PR. Cystic tumors of the pancreas. *Ann Surg* 1990; 212:432-445. [PMID: 2171441]
34. Fernández-del Castillo C, Targarona, J, Thayer SP, Rattner DW, Brugge WR, Warshaw AL. Incidental pancreatic cysts: Clinicopathologic Characteristics and Comparison With Symptomatic Patients. *Arch Surg* 2003; 138:427-434. [PMID: 12686529]
35. Ariyama J, Suyama M, Ogawa K, Ikari T, Nagaiwa J, Fujii D, Tsuchida A. The detection and prognosis of small pancreatic carcinoma. *Int J Pancreatol* 1990; 7:37-47. [PMID: 1964473]
36. Manabe T, Miyashita T, Ohshio G, Nonaka A, Suzuki T, Endo K, et al. Small carcinoma of the pancreas. Clinical and pathologic evaluation of 17 patients. *Cancer* 1988; 62:135-41. [PMID: 3164230]
37. Sataka K, Chung YS, Umeyama K, Takeuchi T, Kim YS. The possibility of diagnosing small pancreatic cancer (less than 4.0 cm) by measuring various tumor markers. *Cancer* 1991; 68:149-52. [PMID: 2049735]
38. Permert J, Ihse I, Jorfeldt L, von Schenck H, Arnqvist HJ, Larsson J. Pancreatic cancer is associated with impaired glucose metabolism. *Eur J Surg* 1993; 159:101-107. [PMID: 8098623]
39. Schwarts SS, Zeidler A, Moossa AR, Kuku SF, Rubenstein AH. A prospective study of glucose tolerance, insulin, C-peptide, and glucagon responses in patients with pancreatic carcinoma. *Am J Dig Dis* 1978; 23:1107-1114. [PMID: 367155]
40. Gullo L, Pezzilli R, Morselli-Labate AM. Diabetes and the risk of pancreatic cancer. Italian Pancreatic Cancer Study Group. *N Engl J Med* 1994; 331:81-84. [PMID: 8208269]
41. Karmody AJ, Kyle J. The association between carcinoma of the pancreas and diabetes mellitus. *Br J Surg* 1969, 56:362-364. [PMID: 5781048]
42. Gullo L. Diabetes and the risk of pancreatic cancer. *Ann Oncol* 1999; 4:79-81. [PMID: 10436791]
43. Cetin M, Colak R, Bayram F, Altinbas M, Unal A, Kelestimur F. High prevalence of diabetes in patients with pancreatic cancer in central Anatolia, Turkey. *Diabetes Res Clin Pract* 2002; 58:97-100. [PMID: 12213350]